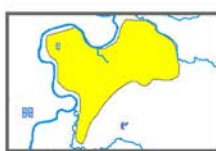


Total Maximum Daily Load Nutrients and Organic Enrichment / Low Dissolved Oxygen For Unnamed Tributary to the Yazoo River

Yazoo River Basin Yazoo County, Mississippi



Prepared By

Mississippi Department of Environmental Quality
Office of Pollution Control
TMDL/WLA Branch

MDEQ
PO Box 2261
Jackson, MS 39225
(601) 961-5171
www.deq.state.ms.us



Mississippi Department of
Environmental Quality

FOREWORD

This report has been prepared in accordance with the schedule contained within the federal consent decree dated December 22, 1998. The report contains one or more Total Maximum Daily Loads (TMDLs) for water body segments found on Mississippi's 1996 Section 303(d) List of Impaired Water bodies. Because of the accelerated schedule required by the consent decree, many of these TMDLs have been prepared out of sequence with the State's rotating basin approach. The implementation of the TMDLs contained herein will be prioritized within Mississippi's rotating basin approach.

The amount and quality of the data on which this report is based are limited. As additional information becomes available, the TMDLs may be updated. Such additional information may include water quality and quantity data, changes in pollutant loadings, or changes in landuse within the watershed. In some cases, additional water quality data may indicate that no impairment exists.

Conversion Factors

To convert from	To	Multiply by	To convert from	To	Multiply by
mile ²	acre	640	acre	ft ²	43560
km ²	acre	247.1	days	seconds	86400
m ³	ft ³	35.3	meters	feet	3.28
ft ³	gallons	7.48	ft ³	gallons	7.48
ft ³	liters	28.3	hectares	acres	2.47
cfs	gal/min	448.8	miles	meters	1609.3
cfs	MGD	0.646	tonnes	tons	1.1
m ³	gallons	264.2	µg/l * cfs	gm/day	2.45
m ³	liters	1000	µg/l * MGD	gm/day	3.79

Fraction	Prefix	Symbol	Multiple	Prefix	Symbol
10 ⁻¹	deci	d	10	deka	da
10 ⁻²	centi	c	10 ²	hecto	h
10 ⁻³	milli	m	10 ³	kilo	k
10 ⁻⁶	micro	:	10 ⁶	mega	M
10 ⁻⁹	nano	n	10 ⁹	giga	G
10 ⁻¹²	pico	p	10 ¹²	tera	T
10 ⁻¹⁵	femto	f	10 ¹⁵	peta	P
10 ⁻¹⁸	atto	a	10 ¹⁸	exa	E

TABLE OF CONTENTS

TMDL INFORMATION PAGE.....	4
EXECUTIVE SUMMARY	5
INTRODUCTION	6
1.1 Background.....	6
1.2 Listing History	6
1.3 Applicable Water Body Segment Use	6
1.4 Applicable Water Body Segment Standard	6
1.5 Nutrient Target Development	7
WATER BODY ASSESSMENT	8
2.1 Water Quality Data	8
2.2 Assessment of Point Sources	8
2.3 Assessment of Non-Point Sources	8
2.4 Estimated Existing Load for Total Nitrogen and Total Phosphorus.....	9
ALLOCATION.....	13
3.1 Wasteload Allocation.....	13
3.2 Load Allocation	13
3.3 Incorporation of a Margin of Safety	13
3.4 Calculation of the TMDL.....	13
3.5 Seasonality and Critical Condition	14
CONCLUSION.....	15
4.1 Next Steps	15
4.2 Public Participation.....	16
REFERENCES	17

FIGURES

Figure 1. Unnamed Tributary to the Yazoo River	5
Figure 2. Unnamed Tributary to the Yazoo River §303(d) Listed Segment	6
Figure 3. Unnamed Tributary to the Yazoo River Watershed Landuse	9

TABLES

Table 1. Listing Information.....	4
Table 2. Water Quality Standards.....	4
Table 3. Total Maximum Daily Load for Eden Creek.....	4
Table 4. Nutrient Targets for the Delta Wadeable Streams	7
Table 5. Landuse Distribution for the Unnamed Tributary to the Yazoo River Watershed	9
Table 6. Estimated Existing Total Nitrogen Load for Unnamed Tributary to the Yazoo River...	10
Table 7. Estimated Existing Total Phosphorous Load for Unnamed Tributary to the Yazoo River	10

TMDL INFORMATION PAGE

Table 1. Listing Information

Name	ID	County	HUC	Evaluated Cause
Unnamed Tributary to the Yazoo River	MS365E	Yazoo	08030206	Nutrients and Organic Enrichment / Low Dissolved Oxygen

Table 2. Water Quality Standards

Parameter	Beneficial use	Water Quality Criteria
Nutrients	Aquatic Life Support	Waters shall be free from materials attributable to municipal, industrial, agricultural, or other dischargers producing color, odor, taste, total suspended solids, or other conditions in such degree as to create a nuisance, render the waters injurious to public health, recreation, or to aquatic life and wildlife, or adversely affect the palatability of fish, aesthetic quality, or impair the waters for any designated uses.
Dissolved Oxygen	Aquatic Life Support	DO concentrations shall be maintained at a daily average of not less than 5.0 mg/l with an instantaneous minimum of not less than 4.0 mg/l

Table 3. Total Maximum Daily Load for Eden Creek

	WLA lbs/day	LA lbs/day	MOS	TMDL lbs/day
TBODu	0.0	320.62	Implicit	320.62
Total Nitrogen	0.0	92.78	Implicit	92.78
Total Phosphorous	0.0	14.40	Implicit	14.40

EXECUTIVE SUMMARY

This TMDL has been developed for Unnamed Tributary to the Yazoo River which is on the Mississippi 2006 Section 303(d) List of Impaired Water Bodies due to evaluated causes of sediment, organic enrichment / low dissolved oxygen, and nutrients. Sediment will be addressed in a separate TMDL report. This TMDL will provide an estimate of the total biochemical oxygen demand (TBODu), total nitrogen (TN) and total phosphorus (TP) allowable in the water body.

Mississippi does not have water quality standards for allowable nutrient concentrations. MDEQ currently has a Nutrient Task Force (NTF) working on the development of criteria for nutrients. An annual concentration of 0.58 mg/l is an applicable target for TN and 0.09 mg/l for TP for water bodies located in the eastern portion of the delta. MDEQ is presenting these preliminary target values for TMDL development which are subject to revision after the development of numeric nutrient criteria.

The Unnamed Tributary to the Yazoo River Watershed is located in HUC 08030206. The listed portion of Unnamed Tributary to the Yazoo River begins near Zelleria from headwaters and flows approximately 1.2 miles to the Yazoo River. The location of the watershed for the listed segment is shown in Figure 1.

The limited nutrient data and estimated existing ecoregion concentrations indicate reductions of nutrients can be accomplished with installation of best management practices.

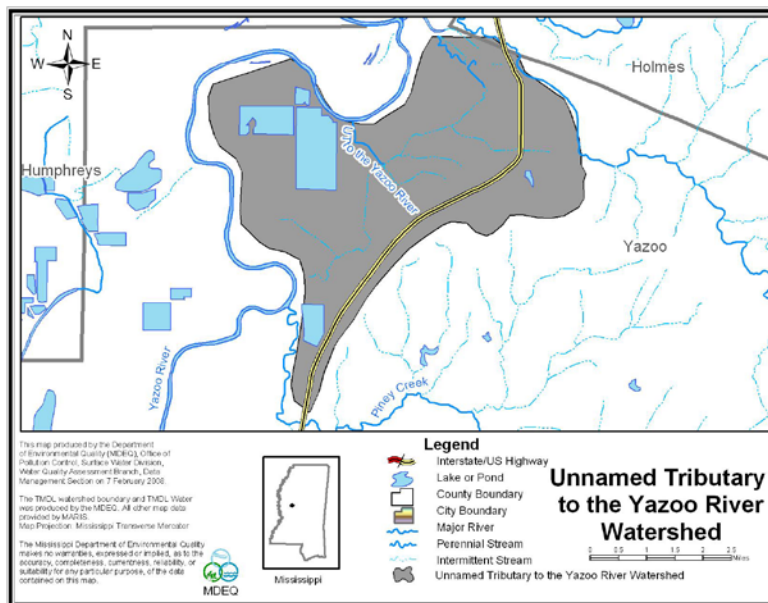


Figure 1. Unnamed Tributary to the Yazoo River

INTRODUCTION

1.1 Background

The identification of water bodies not meeting their designated use and the development of total maximum daily loads (TMDLs) for those water bodies are required by Section 303(d) of the Clean Water Act and the Environmental Protection Agency's (EPA) Water Quality Planning and Management Regulations (40 CFR part 130). The TMDL process is designed to restore and maintain the quality of those impaired water bodies through the establishment of pollutant specific allowable loads. This TMDL has been developed for the 2006 §303(d) listed segment shown in Figure 2.

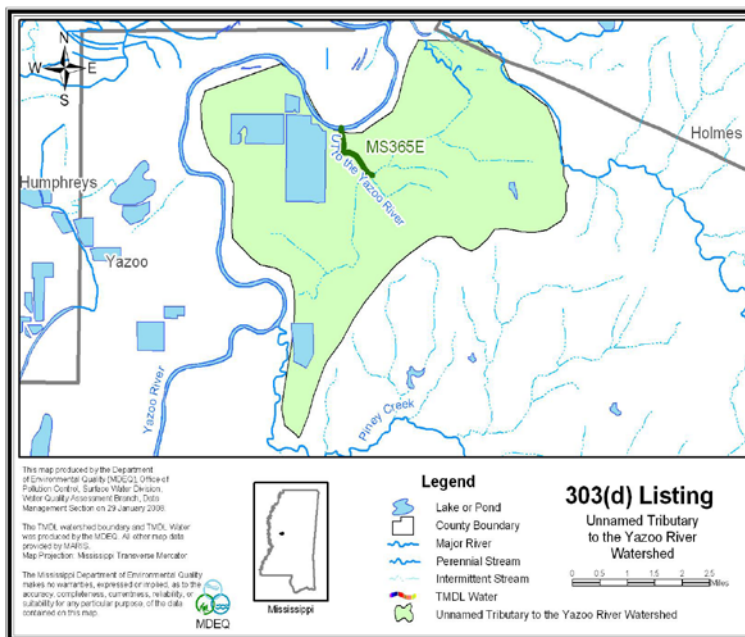


Figure 2. Unnamed Tributary to the Yazoo River §303(d) Listed Segment

1.2 Listing History

The impaired segment was listed due to evaluating the watershed for potential impairment. There are limited data available in the watershed.

1.3 Applicable Water Body Segment Use

The water use classifications are established by the State of Mississippi in the document *State of Mississippi Water Quality Criteria for Intrastate, Interstate, and Coastal Waters* (MDEQ, 2007). The designated beneficial use for the listed segments is Fish and Wildlife.

1.4 Applicable Water Body Segment Standard

The water quality standard applicable to the use of the water body and the pollutant of concern is defined in the *State of Mississippi Water Quality Criteria for Intrastate, Interstate, and Coastal*

Waters (MDEQ, 2007). Mississippi’s current standards contain a narrative criteria that can be applied to nutrients which states “Waters shall be free from materials attributable to municipal, industrial, agricultural, or other discharges producing color, odor, taste, total suspended or dissolved solids, sediment, turbidity, or other conditions in such degree as to create a nuisance, render the waters injurious to public health, recreation, or to aquatic life and wildlife, or adversely affect the palatability of fish, aesthetic quality, or impair the waters for any designated use (MDEQ, 2002).”

In the 1999 Protocol for Developing Nutrient TMDLs, EPA suggests several methods for the development of numeric criteria for nutrients (USEPA, 1999). In accordance with the 1999 Protocol, “The target value for the chosen indicator can be based on: comparison to similar but unimpaired waters; user surveys; empirical data summarized in classification systems; literature values; or professional judgment.”

1.5 Nutrient Target Development

Numeric nutrient criteria are not currently available for Delta streams. Biotic indices such as the MBISQ index used to assess attainment of aquatic life use in streams in other parts of Mississippi are also not available for the Delta. Therefore, a percentile approach has been used to suggest nutrient targets applicable for Delta streams, following the approach suggested by EPA (EPA 2000).

USGS data were partitioned into eastern and western nutrient distributions. USGS nutrient data for the western portion of the Delta were combined with MDEQ’s WADES nutrient data. These two data distributions were used to derive the nutrient concentration associated with the lower quartile following procedures similar to those used by EPA (2000) in developing nutrient criteria recommendations for rivers and streams. The lower quartile nutrient concentrations associated with these data sets are shown in the Table 4 below.

For this TMDL, MDEQ is presenting preliminary targets for TN and TP. An annual concentration 0.58 mg/l is an applicable target for TN and 0.09 mg/l for TP for water bodies located in the eastern portion of the delta. However, MDEQ is presenting these preliminary target values for TMDL development which are subject to revision after the development of nutrient criteria, when the work of the NTF is complete.

Table 4. Nutrient Targets for the Delta Wadeable Streams

Lower Quartile Values		
Nutrient Conc. (mg/l)	East (USGS)	West (WADES/USGS)
TP	0.09	0.16
TN	0.58	1.05

WATER BODY ASSESSMENT

2.1 Water Quality Data

There are limited data available for this water body.

2.2 Assessment of Point Sources

There are no point sources in the watershed.

2.3 Assessment of Non-Point Sources

Non-point loading of nutrients and organic material in a water body results from the transport of the pollutants into receiving waters by overland surface runoff, groundwater infiltration, and atmospheric deposition. The two primary nutrients of concern are nitrogen and phosphorus. Total nitrogen is a combination of many forms of nitrogen found in the environment. Inorganic nitrogen can be transported in particulate and dissolved phases in surface runoff. Dissolved inorganic nitrogen can be transported in groundwater and may enter a water body from groundwater infiltration. Finally, atmospheric gaseous nitrogen may enter a water body from atmospheric deposition.

Unlike nitrogen, phosphorus is primarily transported in surface runoff when it has been sorbed by eroding sediment. Phosphorus may also be associated with fine-grained particulate matter in the atmosphere and can enter streams as a result of dry fallout and rainfall (USEPA, 1999). However, phosphorus is typically not readily available from the atmosphere or the natural water supply (Davis and Cornwell, 1988). As a result, phosphorus is typically the limiting nutrient in most non-point source dominated rivers and streams, with the exception of watersheds which are dominated by agriculture and have high concentrations of phosphorus contained in the surface runoff due to fertilizers and animal excrement or watersheds with naturally occurring soils which are rich in phosphorus (Thomann and Mueller, 1987).

Watersheds with a large number of failing septic tanks may also deliver significant loadings of phosphorus to a water body. All domestic wastewater contains phosphorus which comes from humans and the use of phosphate containing detergents. Table 5 presents typical nutrient loading ranges for various land uses.

The drainage area of Unnamed Tributary to the Yazoo River is approximately 12,963 acres or 20.3 square miles. This watershed contains many different landuse types such as urban, forest, water, and wetlands, but the dominant landuse type within this watershed is cropland. The land use information for the watershed is based on the National Land Cover Database (NLCD 2001). The landuse distribution for the Unnamed Tributary to the Yazoo River Watershed is shown in Table 5 and Figure 3. By taking the landuse and calculating worst-case estimates based on areas given in Table 5 and loadings given in Table 8, the estimated existing TP concentration is 2.07 mg/l and the estimated existing TN concentration is 4.07 mg/l.

Table 5. Landuse Distribution for the Unnamed Tributary to the Yazoo River Watershed

Unnamed Tributary to the Yazoo River	Water	Urban	Forest	Scrub/Barren	Pasture/Grass	Cropland	Wetland	Total
acres	3,136.0	704.1	1,393.5	199.5	65.8	6,144.5	1,319.7	12,963
% area	24.2%	5.4%	10.8%	1.5%	0.5%	47.4%	10.2%	100%

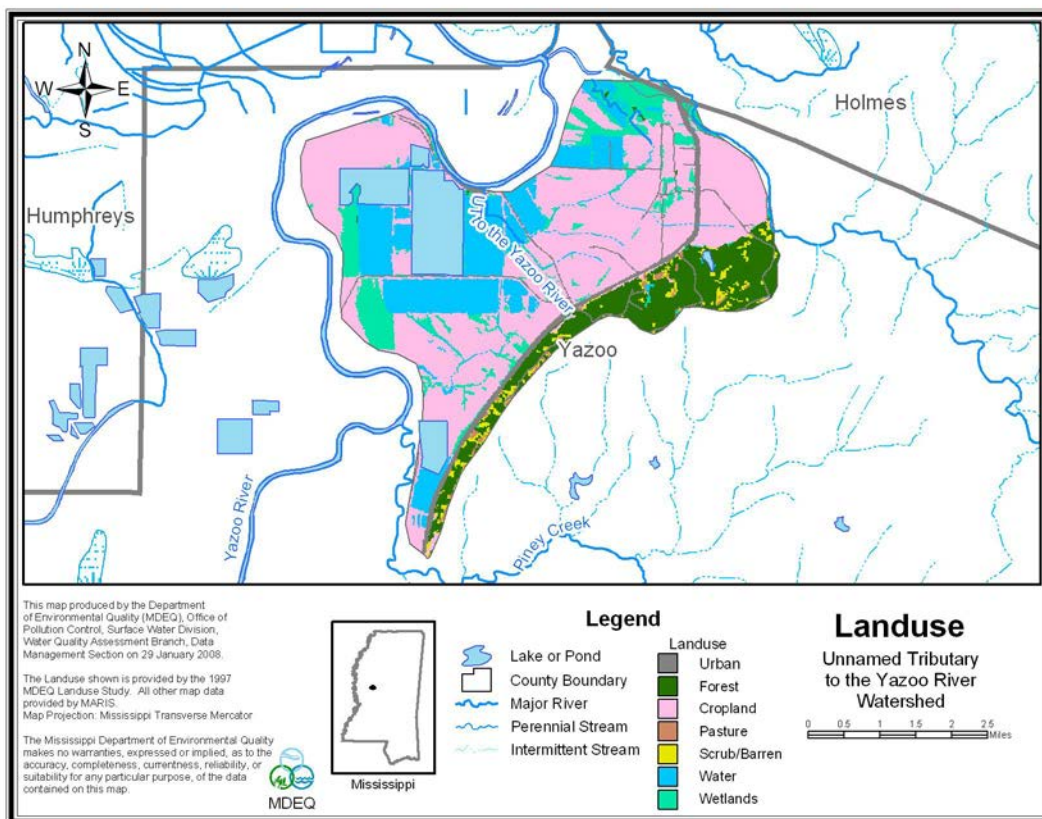


Figure 3. Unnamed Tributary to the Yazoo River Watershed Landuse

2.4 Estimated Existing Load for Total Nitrogen and Total Phosphorus

The flow in the watershed was calculated by utilizing the flow to watershed graph shown in Figure 4. The average annual flow at all available gages was tallied and compared to the watershed size. A very strong correlation between flow and drainage area size was developed for the Delta. Figure 4 shows the graph comparing the drainage area to the annual average flows. The equation for the line that best fits the data was then used to estimate the annual average flow for Unnamed Tributary to the Yazoo River watershed. The TMDL TN and TP loads were then calculated, using Equation 1 and the results are shown in Tables 6 and 7.

$$\text{Nutrient Load (lb/day)} = \text{Flow (cfs)} * 5.394 \text{ (conversion factor)} * \text{Nutrient Concentration (mg/L)}$$

(Eq. 1)

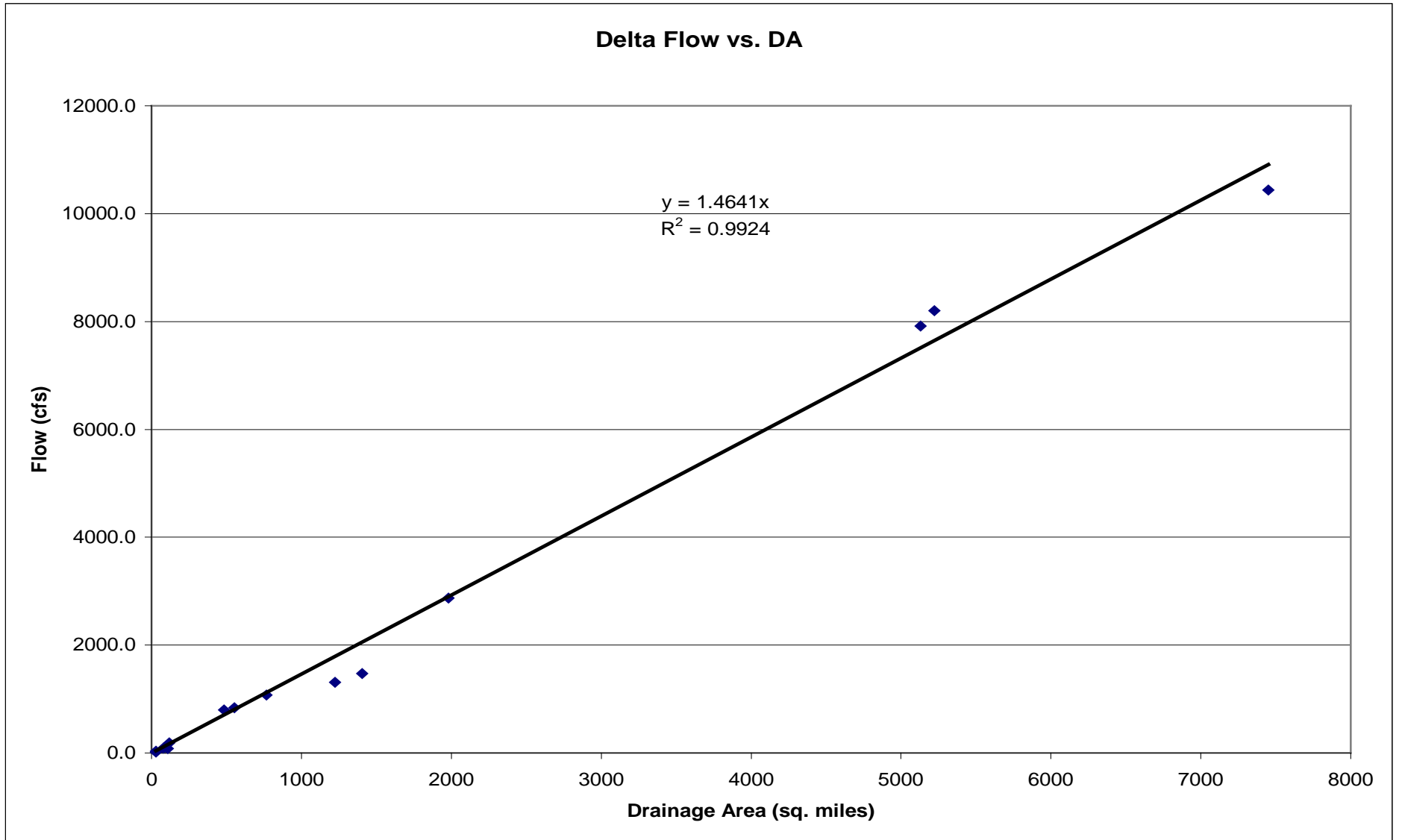
Table 6. Estimated Existing Total Nitrogen Load for Unnamed Tributary to the Yazoo River

Water body	Area (sq miles)	Average Annual Flow (cfs)	TN (mg/L)	TN (lbs/day)
Unnamed Tributary to the Yazoo River	20.3	29.72	4.07	650.32

Table 7. Estimated Existing Total Phosphorous Load for Unnamed Tributary to the Yazoo River

Water body	Area (sq miles)	Average Annual Flow (cfs)	TP (mg/L)	TP (lbs/day)
Unnamed Tributary to the Yazoo River	20.3	29.72	2.07	331.09

Figure 4. Delta Drainage Area to Flow Comparison



Nutrient and Organic Enrichment/Low Dissolved Oxygen TMDL for Unnamed Tributary to the Yazoo River

Table 5.TMDL Calculations and Watershed Sizes

Waterbody	Unnamed Trib		Water	Urban	Scrub/Barren	Forest	Pasture/Grass	Cropland	Wetland	Total	
		Acres	3,136.0	704.1	199.5	1,393.5	65.8	6,144.5	1,319.7	12,963.0	
Land Use	TN kg/mile²	Percent	24.2%	5.4%	1.5%	10.8%	0.5%	47.4%	10.2%	100.0%	
Forest	111.3	Miles ² in watershed	4.9	1.1	0.3	2.2	0.1	9.6	2.1	20.3	
Pasture	777.0	Flow in cfs based on area	29.7	cfs							
Cropland	10956.2										
Urban	287.8	TN Load kg/mi ² annual avg	259.0	287.8	111.3	111.3	777.0	10956.2	259.0		
Water	259.0	TP Load kg/mi ² annual avg	259.0	4.3	61.3	61.3	1295.0	5490.9	259.0		
Wetland	259.0										
aquaculture	2590.0	TN Load kg/day	3.5	0.9	0.1	0.7	0.2	288.2	1.5	295.0	kg/day
		TP Load kg/day	3.5	0.0	0.1	0.4	0.4	144.4	1.5	150.2	kg/day
Land Use	TP kg/mile²										
Forest	61.3	TN target concentration	0.58	mg/l							
Pasture	1295.0	TP target concentration	0.09	mg/l							
Cropland	5490.9										
Urban	4.3	TN estimated concentration	4.07	mg/l							
Water	259.0	TP estimated concentration	2.07	mg/l							
Wetland	259.0										
aquaculture	2590.0	TN target load	92.78	lbs/day							
		TP target load	14.40	lbs/day							
		TN estimated load per day	650.32	lbs/day							
		TP estimated load per day	331.09	lbs/day							
		TN reduction needed	85.73%								
		TP reduction needed	95.65%								

The land use calculations are based on 2004 data. The nutrient estimates are based on USDA ARS. The TMDL targets are based on EPA guidance for calculation of targets when considering all available data.

ALLOCATION

The allocation for this TMDL involves a wasteload allocation and a load allocation for non-point sources necessary for attainment of water quality standards in Unnamed Tributary to the Yazoo River. The nutrient portion of this TMDL is addressed through initial estimates of the existing and target TN and TP concentrations.

3.1 Wasteload Allocation

There are no point sources in the impaired segments. Therefore the waste load allocation has been set to zero for these TMDLs. Future permits will be considered in accordance with Mississippi's *Wastewater Regulations for National Pollutant Discharge Elimination System (NPDES) Permits, Underground Injection Control (UIC) Permits, State Permits, Water Quality Based Effluent Limitations and Water Quality Certification*.

3.2 Load Allocation

Best management practices (BMPs) should be encouraged in the watersheds to reduce potential TN and TP loads from non-point sources. For land disturbing activities related to silviculture, construction, and agriculture, it is recommended that practices, as outlined in "Mississippi's BMPs: Best Management Practices for Forestry in Mississippi" (MFC, 2000), "Planning and Design Manual for the Control of Erosion, Sediment, and Stormwater" (MDEQ, et. al, 1994), and "Field Office Technical Guide" (NRCS, 2000), be followed, respectively.

3.3 Incorporation of a Margin of Safety

The margin of safety is a required component of a TMDL and accounts for the uncertainty about the relationship between pollutant loads and the quality of the receiving water body. The two types of MOS development are to implicitly incorporate the MOS using conservative model assumptions or to explicitly specify a portion of the total TMDL as the MOS. The MOS selected for this model is implicit.

3.4 Calculation of the TMDL

A predictive model was not used to calculate the dissolved oxygen TMDL due to the 7Q10 flow being zero. The TBODu WLA has been set to zero. The LA portion of the TMDL was calculated by setting the background TBODu concentration to 2.0 mg/l and using Equation 1 to find the load. Equation 1 was also used to calculate the TMDL for TP and TN. The target concentration was used with the average flow for the watershed to determine the TMDL.

The nutrient TMDL loads were then compared to the estimated existing loads previously calculated. The estimated existing TP load of 331.09 pounds per day indicates needed reductions of 95.65%. The TMDL for TP is 14.40 lbs/day. The estimated existing total nitrogen load of 650.32 indicates needed reductions of 85.73%. The TMDL for TN is 92.78 lbs/day. Best management practices are encouraged in this watershed to reduce the nonpoint nutrient and organic enrichment loads. The BMPs used to control the nutrient loads will also control the organic enrichment loads which will lead to the water quality meeting the standards.

3.5 Seasonality and Critical Condition

This TMDL accounts for seasonal variability by requiring allocations that ensure year-round protection of water quality standards, including during critical conditions.

CONCLUSION

Nutrients were addressed through an estimate of a preliminary total phosphorous concentration target and a preliminary total nitrogen concentration target. Based on the estimated existing and target total phosphorous concentrations, this TMDL recommends a 96% reduction of the phosphorous loads entering these water bodies to meet the preliminary target range of 0.09 mg/l. Based on the estimated existing and target total nitrogen concentrations, this TMDL recommends a 86% reduction of the nitrogen loads entering these water bodies to meet the preliminary target range of 0.58 mg/l. The implementation of these BMP activities should reduce the nutrient load entering the creeks. This will provide improved water quality for organic enrichment and the support of aquatic life in the water bodies, and will result in the attainment of the applicable water quality standards.

4.1 Next Steps

MDEQ's Basin Management Approach and Nonpoint Source Program emphasize restoration of impaired waters with developed TMDLs. During the watershed prioritization process to be conducted by the Yazoo River Basin Team, this TMDL will be considered as a basis for implementing possible restoration projects. The basin team is made up of state and federal resource agencies and stakeholder organizations and provides the opportunity for these entities to work with local stakeholders to achieve quantifiable improvements in water quality. Together, basin team members work to understand water quality conditions, determine causes and sources of problems, prioritize watersheds for potential water quality restoration and protection activities, and identify collaboration and leveraging opportunities. The Basin Management Approach and the Nonpoint Source Program work together to facilitate and support these activities.

The Nonpoint Source Program provides financial incentives to eligible parties to implement appropriate restoration and protection projects through the Clean Water Act's Section 319 Nonpoint Source (NPS) Grant Program. This program makes available around \$1.6M each grant year for restoration and protections efforts by providing a 60% cost share for eligible projects.

Mississippi Soil and Water Conservation Commission (MSWCC) is the lead agency responsible for abatement of agricultural NPS pollution through training, promotion, and installation of BMPs on agricultural lands. USDA Natural Resource Conservation Service (NRCS) provides technical assistance to MSWCC through its conservation districts located in each county. NRCS assists animal producers in developing nutrient management plans and grazing management plans. MDEQ, MSWCC, NRCS, and other governmental and nongovernmental organizations work closely together to reduce agricultural runoff through the Section 319 NPS Program.

Mississippi Forestry Commission (MFC), in cooperation with the Mississippi Forestry Association (MFA) and Mississippi State University (MSU), have taken a leadership role in the development and promotion of the forestry industry Best Management Practices (BMPs) in Mississippi. MDEQ is designated as the lead agency for implementing an urban polluted runoff control program through its Stormwater Program. Through this program, MDEQ regulates most construction activities. Mississippi Department of Transportation (MDOT) is responsible for implementation of erosion and sediment control practices on highway construction.

Due to this TMDL, projects within this watershed will receive a higher score and ranking for funding through the basin team process and Nonpoint Source Program described above.

4.2 Public Participation

This TMDL will be published for a 30-day public notice. During this time, the public will be notified by publication in the statewide newspaper. The public will be given an opportunity to review the TMDLs and submit comments. MDEQ also distributes all TMDLs at the beginning of the public notice to those members of the public who have requested to be included on a TMDL mailing list. Anyone wishing to become a member of the TMDL mailing list should contact Kay Whittington at Kay_Whittington@deq.state.ms.us.

All comments should be directed to Kay_Whittington@deq.state.ms.us or Kay Whittington, MDEQ, PO Box 10385, Jackson, MS 39289. All comments received during the public notice period and at any public hearings become a part of the record of this TMDL and will be considered in the submission of this TMDL to EPA Region 4 for final approval.

REFERENCES

Davis and Cornwell. 1998. *Introduction to Environmental Engineering*. McGraw-Hill.

[MDEQ. 2007. *Mississippi's Plan for Nutrient Criteria Development*. Office of Pollution Control.](#)

MDEQ. 2003. Development and Application of the Mississippi Benthic Index of Water body Quality (M-BISQ). June 30, 2003. Prepared by Tetra Tech, Inc., Owings Mills, MD, for the Mississippi Department of Environmental Quality, Office of Pollution Control, Jackson, MS. (For further information on this document, contact Randy Reed [601-961-5158]).

MDEQ. 2007. *State of Mississippi Water Quality Criteria for Intrastate, Interstate, and Coastal Waters*. Office of Pollution Control.

[USEPA. 1999. *Protocol for Developing Nutrient TMDLs*. EPA 841-B-99-007. Office of Water \(4503F\), United States Environmental Protection Agency, Washington D.C. 135 pp.](#)

MDEQ. 1994. *Wastewater Regulations for National Pollutant Discharge Elimination System (NPDES) Permits, Underground Injection Control (UIC) Permits, State Permits, Water Quality Based Effluent Limitations and Water Quality Certification*. Office of Pollution Control.

Telis, Pamela A. 1992. *Techniques for Estimating 7-Day, 10-Year Low Flow Characteristics for Ungaged Sites on Water bodies in Mississippi*. U.S. Geological Survey, Water Resources Investigations Report 91-4130.

Metcalf and Eddy, Inc. 1991. *Wastewater Engineering: Treatment, Disposal, and Reuse* 3rd ed. New York: McGraw-Hill.

Thomann and Mueller. 1987. *Principles of Surface Water Quality Modeling and Control*. New York: Harper Collins.

USEPA. 1997. *Technical Guidance Manual for Developing Total Maximum Daily Loads, Book 2: Streams and Rivers, Part 1: Biochemical Oxygen Demand/Dissolved Oxygen and Nutrients/Eutrophication*. United States Environmental Protection Agency, Office of Water, Washington, D.C. EPA 823-B-97-002.

USEPA. 2000. *Nutrient Criteria Technical Guidance Manual Rivers and Streams*. United States Environmental Protection Agency, Office of Water, Washington, D.C. EPA-822-B-00-002.